



**Cavell Street, London, E1**

£1,800pcm

**ASSURE  
MOVE**  
ESTATE AGENTS

# Property Description

Assure Move are delighted to present this two bedroom flat located within a stunning Georgian Conversion. This property consists of Two double bedrooms and a large open plan Kitchen/Reception. Finished to a high standard this flat benefits from solid wooden floors, high spec integrated kitchen, a modern neutral décor and a huge amount of natural light.

EPC Rating: C





# Key Features

- ✓ High Ceilings
- ✓ Solid Wood Flooring
- ✓ Fully Integrated Kitchen
- ✓ Excellent Natural Light
- ✓ Great Transport Links
- ✓ Two Double Bedrooms















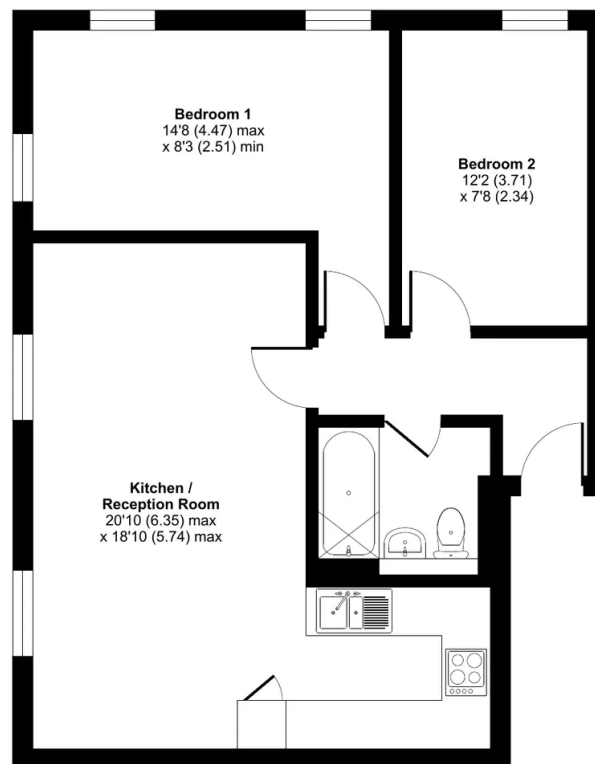


All

## Cavell Street, London, E1

Approximate Area = 630 sq ft / 58.5 sq m

For identification only - Not to scale



FIRST FLOOR



Floor plan produced in accordance with RICS Property Measurement Standards incorporating International Property Measurement Standards (IPMS2 Residential). © richcom 2022. Produced for Assure Move. REF: 839891



**Assure Move**

020 3971 2294

Info@assure-move.co.uk

